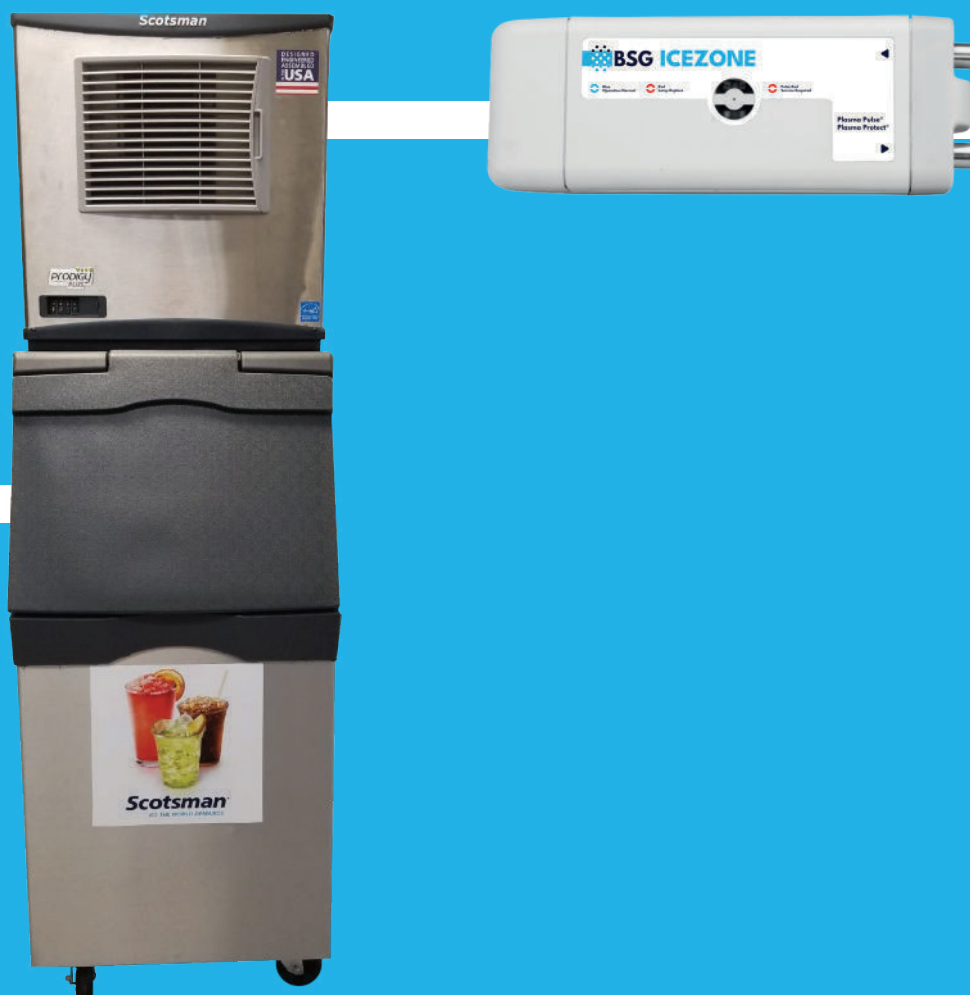


# ICEZONE INSTALLATION

## Installation for Scotsman Prodigy Cubers



This guide will show the steps to install ICEZONE on the Scotsman Prodigy Cube making Ice Machines. Please review the entire document prior to installation.

**Caution:** Installation should be done by a qualified technician using appropriate safety equipment and procedures.

# Pre-Installation Requirements

## Clean and Sanitize Ice Machine Prior to Installation

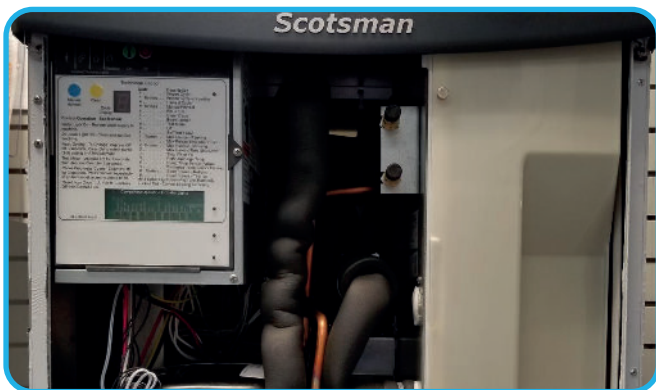
Before Installing ICEZONE, clean the interior of the ice machine thoroughly according to the manufacturer's guidelines. All surfaces should be free of slime and scale before starting the installation.

## Recommended Tools

Before Installing ICEZONE, clean the interior of the ice machine thoroughly according to the manufacturer's guidelines. All surfaces should be free of slime and scale before starting the installation.

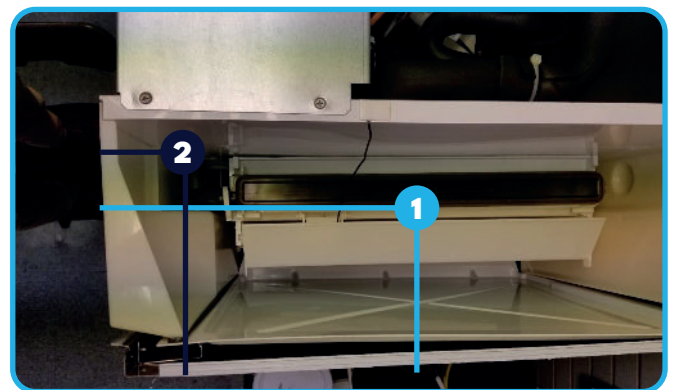
- |                             |                                |   |
|-----------------------------|--------------------------------|---|
| — Hand Drill                | — Hose Cutter or Utility Knife | — File, Knife, or Side cutters to de-burr holes         |
| — Phillips (+) Screw Driver | — 1 ¼" Crescent Wrench         | — Step Ladder   |
| — 1 inch (25mm) Hole Saw    | — Tape Measure                 | — Personal Protective Equipment (Gloves, Glasses, etc.) |
| — 1/8 inch drill bit        | — Permanent Marker             |   |

# Installation



1.

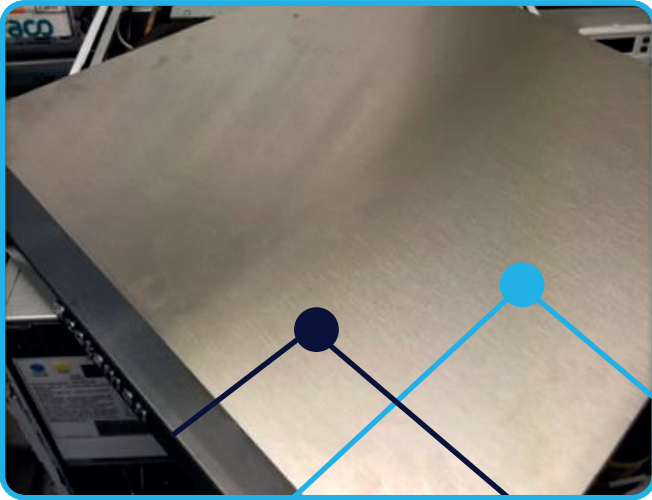
Before working on the ice machine, the ice in the bin must be removed. Turn the ice machine power to off or unplug the unit.



2.

1. Measure from outside of the front wall to center of the evaporator and from the outside side wall to the center.

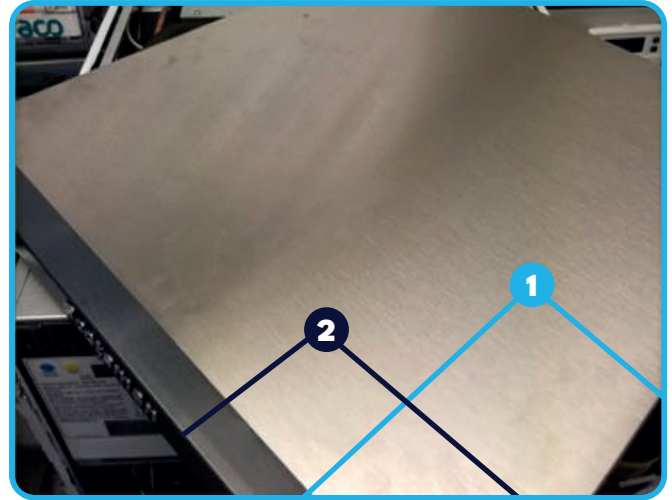
2. Measure from the outside of the front wall to the center of the open space, next to the evaporator. Then from the outside of the side wall.



**3.**

Using the measurements, mark the locations for the supply and return fittings.

**Remove the top cover from the ice machine before drilling.**



**4.**

**1.** Drill one inch (25mm) hole in the top cover of the ice machine. Install single barbed bulkhead fitting for the supply from the ICEZONE. Use two white gaskets and two nuts. No threads should be exposed inside of the ice production area.

**2.** Drill one inch (25mm) hole in the top cover of the ice machine. Install double barbed bulkhead fitting for the return to the ICEZONE. Use two white gaskets and two nuts. No threads should be exposed inside of the ice production area.



**5.**

Assemble the supply fitting as shown. This includes a single barbed fitting, low profile nut and a white rubber washer.



**6.**

Install the supply fitting as shown. This includes a second low profile nut and white rubber washer. There should be no exposed threads on the interior surface of the lid per NSF guidelines.



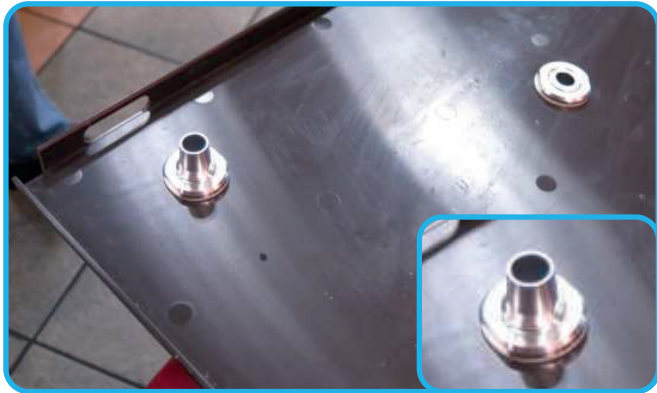
**7.**

Assemble the return fitting as shown. This includes a double ended barb fitting, low profile nut and white rubber washer.



**8.**

Drill the holes as marked.  
The final hole diameter should be 1.0" for each fitting.



**9.**

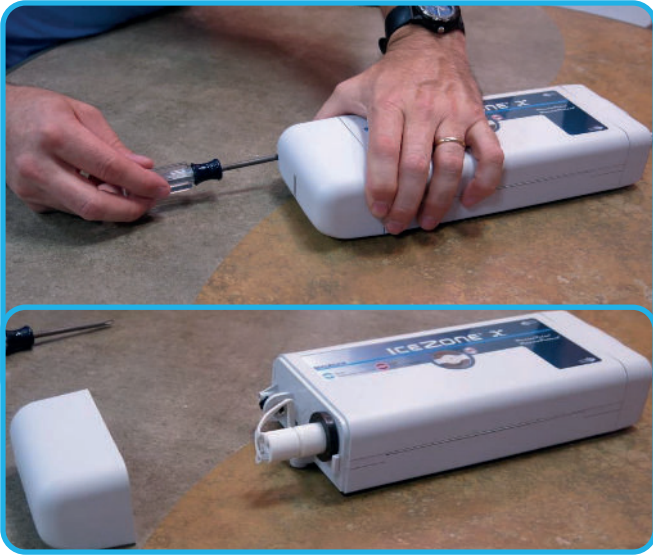
Install the supply fitting as shown. This includes a second low profile nut and white rubber washer. There should be no exposed threads on the interior surface of the lid per NSF guidelines.



**10.**

The fittings on the top side of the lid should be completed as shown. Ensure the fitting nuts are tight and prepare to mount the ICEZONE unit.





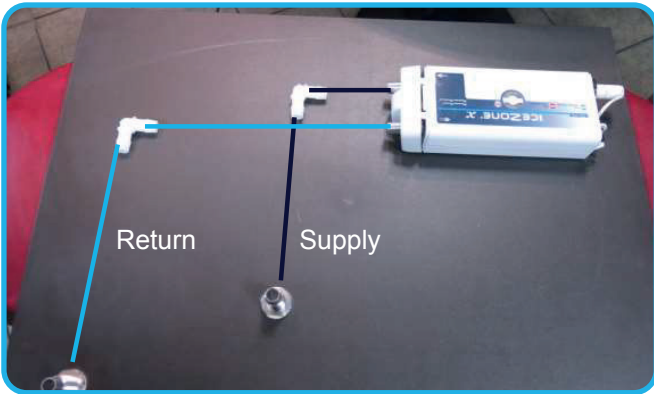
## 11.

Remove the service cover from the ICEZONE unit. This provides access to the lamp, power input and mounting boss. As the screw is removed from the cover, be sure to keep it with the cover so it is available for re-assembly.



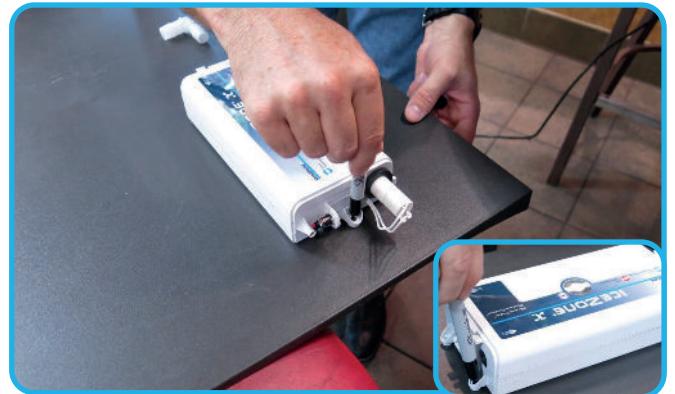
## 12.

Remove the Input/Output cover from the ICEZONE unit. This provides access to additional mounting bosses. As the screw is removed from the cover, be sure to keep it with the cover so it is available for re-assembly. The cover requires a firm pull while rotating towards the top for removal.



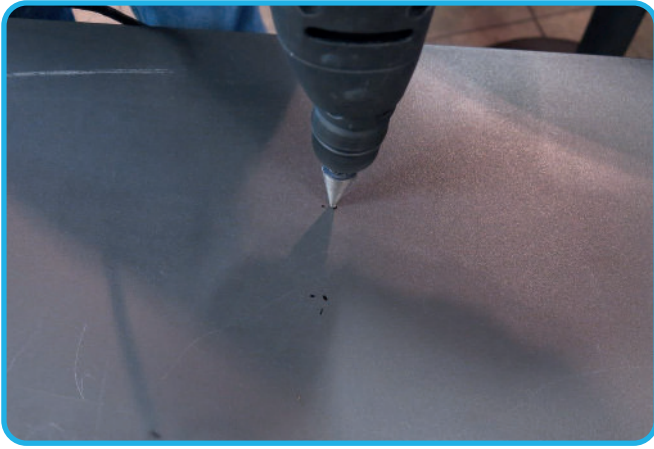
## 13.

Place the ICEZONE Unit on the lid and layout the routing of the supply and return tubing. The ICEZONE Unit should be placed in the back right corner of the cover (looking at the front of the ice machine). Place the 90 degree hose Barbs in place to visualize the routing. Observe the flow direction arrows on the ICEZONE Unit.



## 14.

Mark the holes to mount the ICEZONE Unit on the lid. Use a pen to locate the three mounting holes.



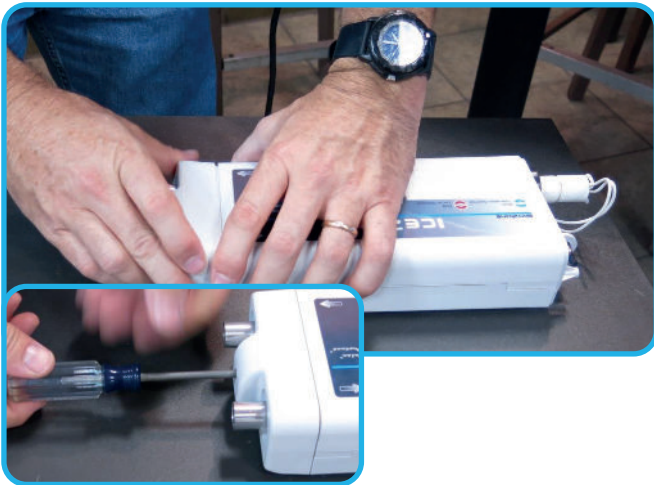
**15.**

Drill the holes to mount the ICEZONE Unit on the lid.  
Drill three 1/8" holes.



**16.**

Place the mounting rivets or self drilling screws into the mounting holes.



**17.**

Re-attach the Input/Output cover and secure with the original screw.



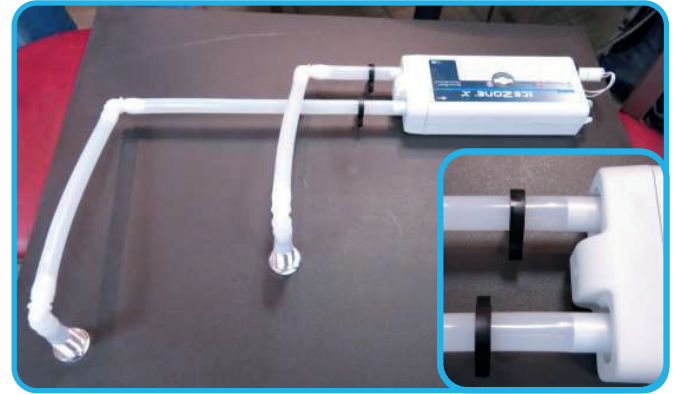
**18.**

Cut two 2.5 inch pieces of tubing to connect the supply and return fittings to the 90 degree hose barbs.



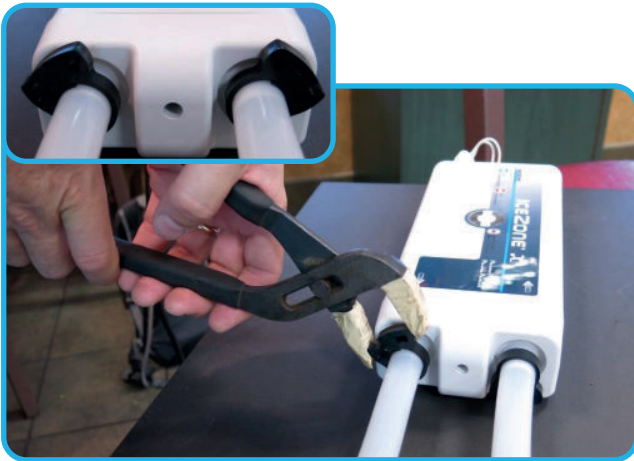
## 19.

Assemble the supply and return fittings to the 90 degree hose barbs using the 2.5 inch pieces of tubing.  
*Installer's Tip:* Heating the tubing in hot water eases the installation of the tubing onto the fittings.



## 20.

Cut and assemble the remaining supply and return tubing and fittings. There should be 12" of unused tubing. Place the handy clamps (black) on the tubing which is placed over the ports on the ICEZONE Unit.  
*Installer's Tip:* Heating the tubing in hot water eases the installation of the tubing onto the fittings.



## 21.

Tighten the handy clamps with a pliers to secure the tubing on the ICEZONE unit.



## 22.

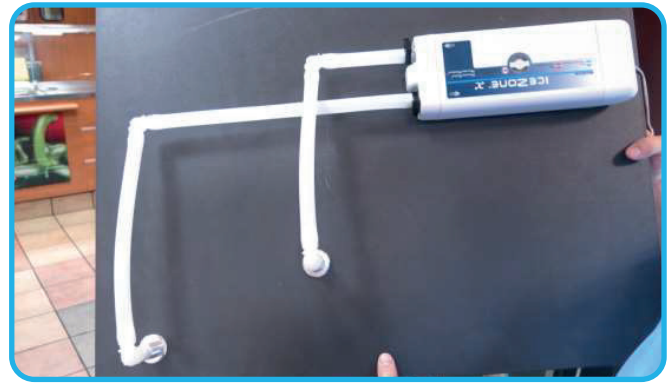
Insert the DC plug from the wall adapter through the "P" shaped hole in the service cover. Plug the DC connector into the ICEZONE Unit's power input plug.





**23.**

Reinstall the service cover and secure with the original screw.



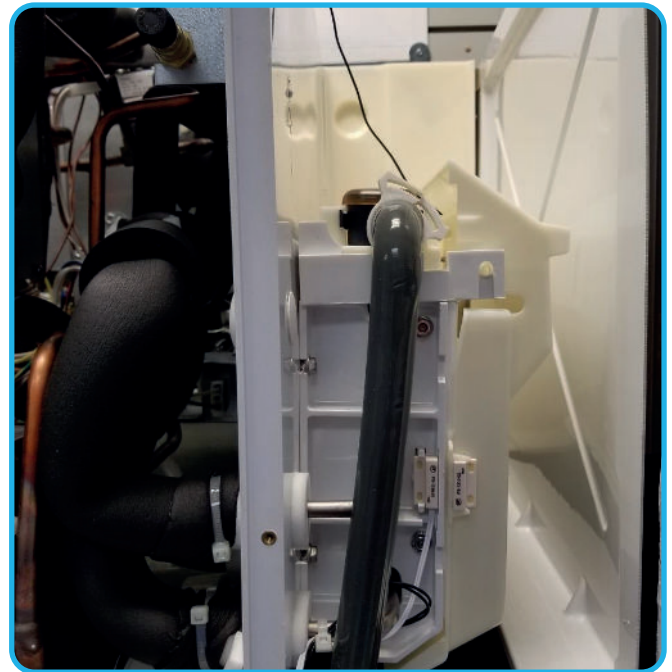
**24.**

The completed installation on the cover should look like the picture shown.



**25.**

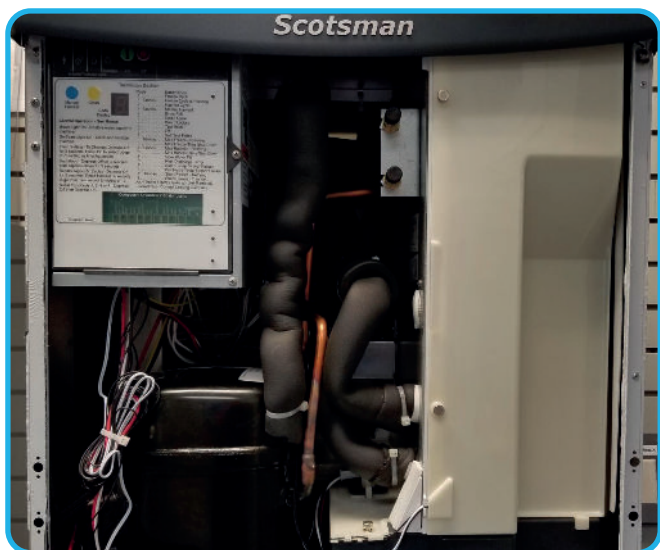
Install the top cover. The completed installation on the ice machine should look like the picture shown.



**26.**

Install the remaining 12 inch length of tubing onto the return fitting. Return tubing should be routed from the return fitting down the side of the evaporator. It is important that the return tubing does not interfere with the operation of the curtain and the ice level sensor. Verify that the curtain has the normal range of motion and resets to the natural position on its own.





**27.**

Install the white plastic wall. Sanitize this as well before turning the ice machine on and closing the cover.



**28.**

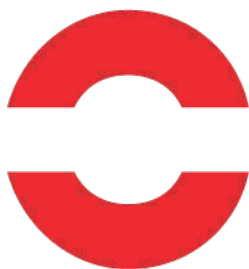
Close the ice machine after turning it on. Plug the ICEZONE into a nearby 100VAC outlet that is not switched off. The ICEZONE runs 24 hours/day, 7 days per week. Check to make sure the blue light is lit on the top of the ICEZONE.

## Bulb Indicators



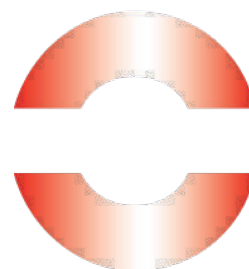
### Blue: Operation Normal

When ICEZONE is connected to power correctly and the operation is normal, a blue light shows on top of the unit.



### Red: Replace Bulb

When the red light is steady on top of the ICEZONE, the lamp needs to be changed.



### Flashing Red: Service Required

When the red light is flashing on top of the ICEZONE, the unit requires service.

**Thank you for purchasing ICEZONE**

Contact BSG today ☺☺

e: [technical@bsg-uv.com](mailto:technical@bsg-uv.com)  
t: +1 407-876-2000  
w: [bsg-uv.com](http://bsg-uv.com)

a: 9561 Satellite Boulevard,  
Ste 300, Orlando,  
Florida, 32837

