

ICEZONE INSTALLATION

**Installation for Manitowoc S-Series
Ice Machines Standard Top-Mount
Installation**



This module will show the steps to install ICEZONE on the Manitowoc S-Series Ice Machines. Please read the entire document prior to installation.

Caution: Installation should be done by a qualified technician using appropriate safety equipment and procedures.

Pre-Installation Requirements

Clean and Sanitize Ice Machine Prior to Installation

Before Installing ICEZONE, clean the interior of the ice machine thoroughly according to the manufacturer's guidelines. All surfaces should be free of slime and scale before starting the installation.

Recommended Tools

Before Installing ICEZONE, clean the interior of the ice machine thoroughly according to the manufacturer's guidelines. All surfaces should be free of slime and scale before starting the installation.

- | | | |
|-----------------------|--------------------------------|----------------------------------|
| — Hand Drill | — Phillips Screwdriver | — 1 ¼" Crescent Wrench |
| — Phillips Bit Driver | — 4ft Ladder | — Marker to mark hole locations |
| — 7/8" Step Drill Bit | — Safety Goggles | — File or knife to de-burr holes |
| — ¼" Nut Driver | — Hose Cutter or Utility Knife | |

Installation



1.

This is the Manitowoc S-Series ice machine in place above a drink dispenser in a typical restaurant installation.

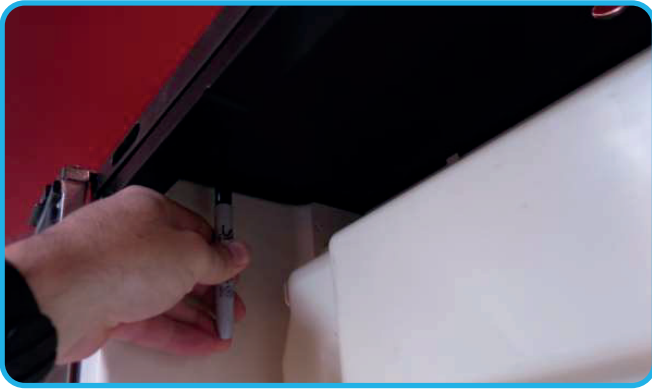
Before working on the ice machine, the ice in the bin must be removed.

Turn the ice machine power switch to the **OFF** position.



2.

Mark the location for the ICEZONE supply fitting. This is the fitting where the plasma will enter the ice machine. This should be directly over the evaporator and should deliver plasma behind the curtain.



3.

Mark the location for the ICEZONE return fitting. This is the fitting where the plasma will return to the ICEZONE. This should be located on the left side of the top cover (looking at the front of the ice machine). This hole should be spaced off of the interior wall of the ice machine by 1.5 inches. The hole should be spaced from the front frame of the ice machine by 1.5 inches also.

The proper spacing will prevent the return tube from interfering with the ice curtain operation.



4.

Drill the holes as marked.

The final hole diameter should be 1.0" for each fitting.



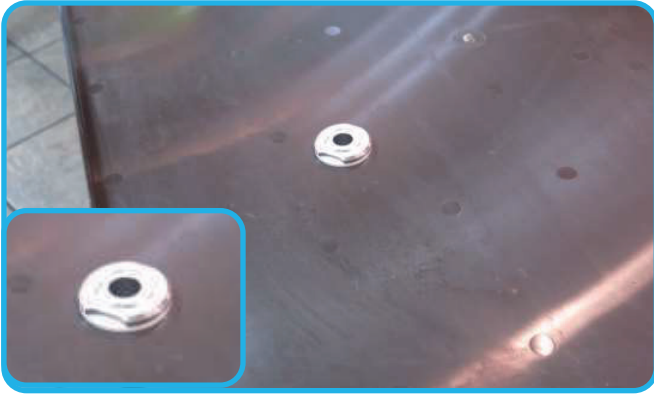
5.

Clean the burrs from the hole edges and prepare to install the fittings.



6.

Assemble the supply fitting as shown. This includes a single ended barb fitting, low profile nut and white rubber washer.



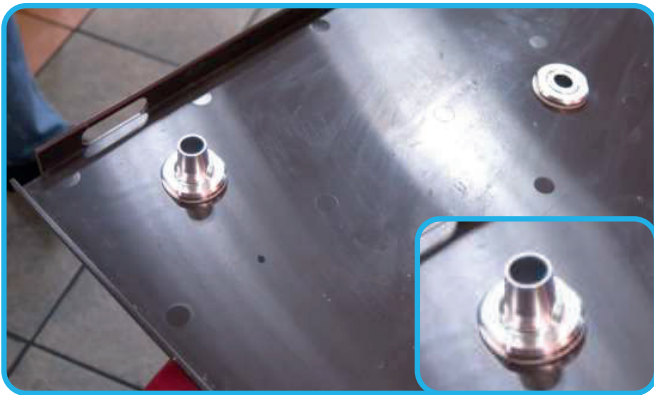
7.

Install the supply fitting as shown. This includes a second low profile nut and white rubber washer. There should be no exposed threads on the interior surface of the lid per NSF guidelines.



8.

Assemble the return fitting as shown. This includes a double ended barb fitting, low profile nut and white rubber washer.



9.

Install the supply fitting as shown. This includes a second low profile nut and white rubber washer. There should be no exposed threads on the interior surface of the lid per NSF guidelines.



10.

The top side of the lid should be completed as shown. Ensure the fitting nuts are tight and prepare to mount the ICEZONE unit.



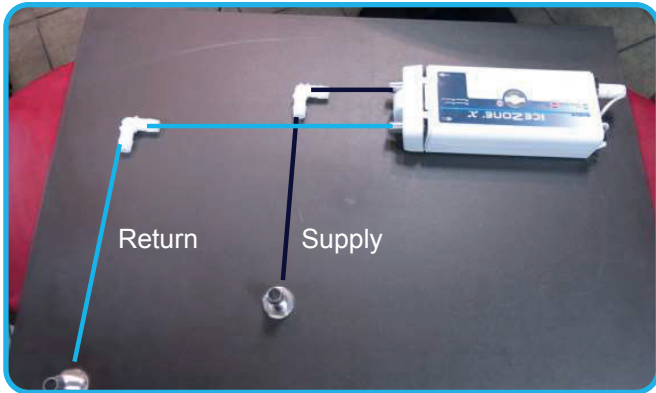
11.

Remove the service cover from the ICEZONE unit. This provides access to the lamp, power input and mounting boss. As the screw is removed from the cover, be sure to keep it with the cover so it is available for re-assembly.



12.

Remove the Input/Output cover from the ICEZONE unit. This provides access to additional mounting bosses. As the screw is removed from the cover, be sure to keep it with the cover so it is available for re-assembly. The cover requires a firm pull while rotating towards the top for removal.



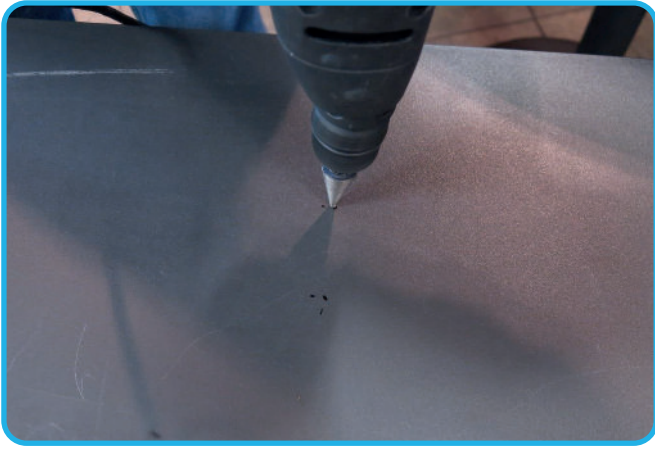
13.

Place the ICEZONE Unit on the lid and layout the routing of the supply and return tubing. The ICEZONE Unit should be placed in the back right corner of the cover (looking at the front of the ice machine). Place the 90 degree hose Barbs in place to visualize the routing. Observe the flow direction arrows on the ICEZONE Unit.



14.

Mark the holes to mount the ICEZONE Unit on the lid. Use a pen to locate the three mounting holes.



15.

Drill the holes to mount the ICEZONE Unit on the lid.
Drill three 1/8" holes.



16.

Place the mounting rivets or self drilling screws into the mounting holes.



17.

Re-attach the Input/Output cover and secure with the original screw.



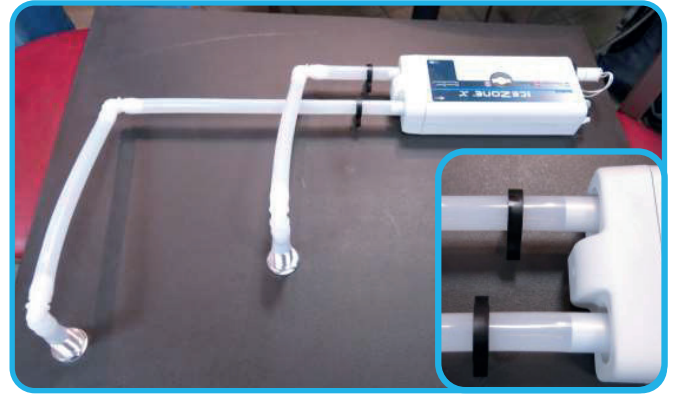
18.

Cut two 2.5 inch pieces of tubing to connect the supply and return fittings to the 90 degree hose barbs.



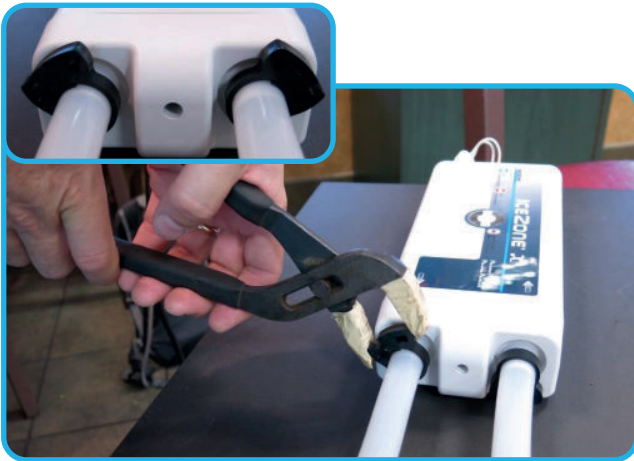
19.

Assemble the supply and return fittings to the 90 degree hose barbs using the 2.5 inch pieces of tubing.
Installer's Tip: Heating the tubing in hot water eases the installation of the tubing onto the fittings.



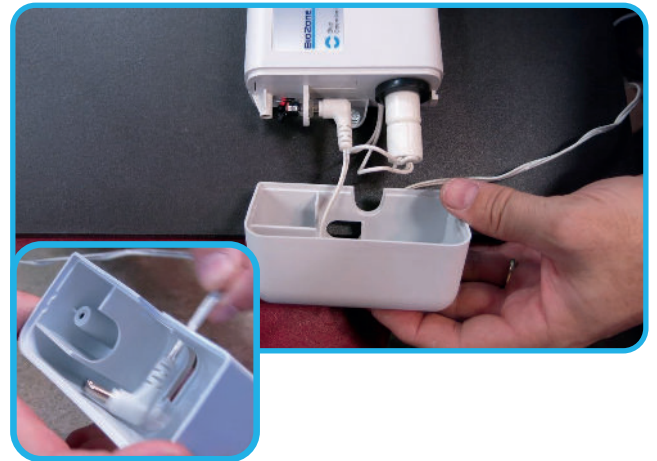
20.

Cut and assemble the remaining supply and return tubing and fittings. There should be 12" of unused tubing. Place the handy clamps (black) on the tubing which is placed over the ports on the ICEZONE Unit.
Installer's Tip: Heating the tubing in hot water eases the installation of the tubing onto the fittings.



21.

Tighten the handy clamps with a pliers to secure the tubing on the ICEZONE unit.



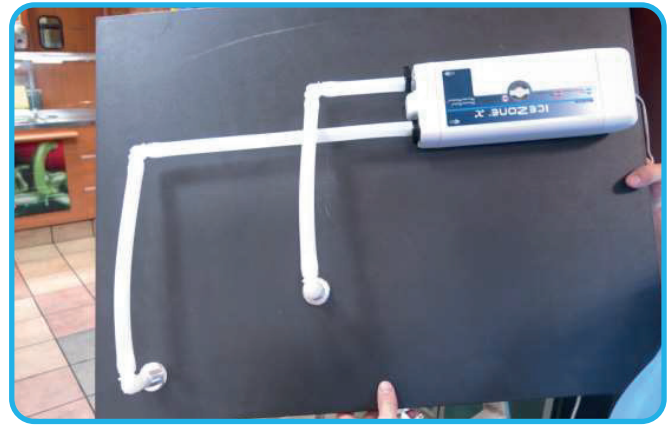
22.

Insert the DC plug from the wall adapter through the "P" shaped hole in the service cover. Plug the DC connector into the ICEZONE Unit's power input plug.



23.

Reinstall the service cover and secure with the original screw.



24.

The completed installation on the cover should look like the picture shown.



25.

The completed installation on the ice machine should look like the picture shown.



26.

The completed installation on the ice machine should look like the picture shown. The supply fitting is located above the curtain and the return fitting is located in front and to the left side of the curtain.



27.

Install the remaining 12 inch length of tubing onto the return fitting.



28.

Test the movement of the ice curtain to ensure proper operation. The return tube should not prevent the curtain from activating the "bin full" switch.



29.

Replace the ice shield and sanitize this as well before turning the ice machine on and closing the cover.



30.

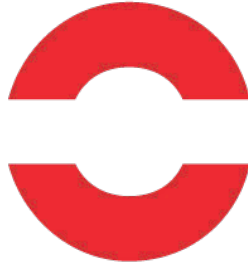
Close the ice machine after turning it on. Plug the ICEZONE into a nearby 100VAC outlet that is not swithed off. The ICEZONE runs 24 hours/day, 7 days per week. Check to make sure the blue light is lit on the top of the ICEZONE.

Bulb Indicators



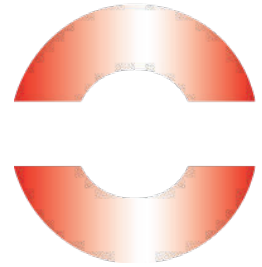
Blue: Operation Normal

When ICEZONE is connected to power correctly and the operation is normal, a blue light shows on top of the unit.



Red: Replace Bulb

When the red light is steady on top of the ICEZONE, the lamp needs to be changed.



Flashing Red: Service Required

When the red light is flashing on top of the ICEZONE, the unit requires service.

Thank you for purchasing ICEZONE

Contact BSG today ••

e: technical@bsg-uv.com
t: +1 407-876-2000
w: bsg-uv.com

a: 9561 Satellite Boulevard,
Ste 300, Orlando,
Florida, 32837

